

# CENTRAL MANAGEMENT SYSTEM ENTERPRISE

## MULTI-USER, ROLE BASED RECEIVER MANAGEMENT

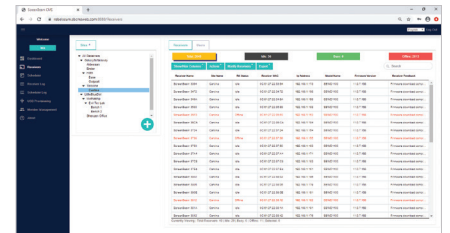
# ScreenBeam®

ScreenBeam CMS Enterprise enables administrators to remotely access and manage ScreenBeam receivers distributed throughout multiple geographic locations and across the network with ease. Administrators can monitor receiver status, apply security policies, troubleshoot problems, perform a reset, update receivers, and more. New role-based access supports multiple simultaneous administrators and allows for different privilege levels among administrators.

Included with ScreenBeam 1100, 1000 EDU and later receivers. CMS Enterprise dramatically reduces the cost of deploying and managing wireless receivers and supports any size deployment.

Role-based access provides monitoring or administration of ScreenBeam receivers by multiple administrators. The Dashboard provides rapid overview of trouble spots to maximize ScreenBeam availability. Detailed status checks and settings changes can be accomplished on any receiver without manual logins.

Allows grouping of receivers by sites so administrators can focus on specific areas as needed. Task scheduling allows common tasks such as firmware updates without manual intervention. Detailed log checks allow validation of any action or task accomplished by any administrator. Whether managing hundreds or thousands of receivers, CMS Enterprise provides the flexibility and scalability to meet IT Administrator needs.



### Advantages

- ✓ Centrally manage ScreenBeam receivers for any size deployment
- ✓ Configure policy and security settings to fit your environment
- ✓ Schedule firmware updates and push policy settings as needed
- ✓ Remotely monitor ScreenBeam status and log events
- ✓ Enable IT help desk to remotely support users

### CMS Enterprise vs CMS Feature Comparison

Features	CMS Enterprise	CMS
Platform	Web-based	App-based
Hosting	Self-hosted	Self-hosted
Operating system	Windows 10 & Server 2019	Windows 10 & Server 2019
Admin interface	Web browser	Windows application
Concurrent admin support	Yes, Multi-user	No, Single user
Role-based access control	Global admin, Site admin, Site monitor	Not supported
Dashboard overview	Devices and trouble hotspots	Not supported
Number of ScreenBeam receivers	Up to 5000	Up to 2500
Supported ScreenBeam receivers	1000-series and 960	1000-series, 960 and 750
Pricing (included with)	1000-series	1000-series, 960 and 750

## See the Status of Each Receiver on One Screen

The Group Pane is the main interface of the CMS, providing an at-a-glance view for the status and key information of all connected ScreenBeam receivers.

### Features

- Web-based multi-user access
- Multiple assignable per-user roles
- Dashboard for rapid status overview
- Receiver grouping with up to three levels of hierarchy by site
- Monitoring and settings alteration of individual or grouped receivers
- Receiver logging for valuable insight and data
- Provisioning via network or USB for rapid deployment
- Task scheduling for automating tasks
- Runs on isolated networks
- Included with every ScreenBeam 1100, 1000 EDU and later models at no cost

### Industry Leader

ScreenBeam Inc., a leading wireless display and collaboration provider, delivers an app-free screen sharing experience on any modern device to bring intuitive wireless collaboration into any meeting space or classroom. ScreenBeam is Microsoft's co-engineering partner for wireless display enabling wireless Office 365 experiences.

ScreenBeam solutions are used as the validation platform for wireless display functionality by companies like Microsoft and leading PC OEM and device companies. Headquartered in Santa Clara, CA, ScreenBeam has offices across the United States, Europe and Asia.

### System Requirements

#### Hardware Requirements

Operating System	Windows 10 (Enterprise/Professional), or Windows Server (2019)
Processor	Intel Core i5 2GHz Fourth generation equivalent (or later)
Memory	8 GB of RAM (or higher)
Hard disk space	30 GB (or higher)
Internet connection	For installation and updates
USB (Optional)	USB 2.0 or later for receiver provisioning

#### Network Access

Wired connection	10/100/1000-BASE-T Ethernet
Wireless connection	802.11 dual-band access point with one of the supported authentication methods; Open, Shared, WPA-Personal, WPA2-Personal, WPA2-Enterprise (802.1x) PEAP-MsCHAPv2, or EAP-TLS (up to 2048-bit certificate)
Standalone web server	For firmware updates
Network ports	Configurable port for admin access
Supported Protocols (Optional)	Internal corporate DNS server

© 2020 All rights reserved. ScreenBeam and the ScreenBeam logo are registered trademarks owned by ScreenBeam Inc. All other names are properties of their respective owners. Specifications subject to change without notice. 051520-v4

**ScreenBeam®**

