

BTT*-*P, FFT*-*P, SSP-N

BTT BROADBAND TELECOMMUNICATIONS TAP (POWER EXTRACTING)

FFT-P FULL FEATURE TAP (SIGNAL CONDITIONING CAPABILITY)

SSP-N STARLINE® SYSTEM PASSIVES



Motorola's new 1 GHz RF Taps and System Passives are capable of delivering Video, Cable Telephony, and Data over the broadband hybrid fiber-coax system. These products have all of the same features and performance as the standard N-series. Motorola maintains the commitment to provide the latest technology while maintaining backward compatibility and allowing future upgradability.

The BTT*-*P taps extract power and deliver it to the network interface device (NID) on the side of the home in cable telephony applications. RF and AC signals can be distributed through the F-ports, AC power via twisted pair is also available. Network powering of telephony devices is critical for system reliability in these applications.

The FFT*-*P taps have been designed to offer improved return path performance for today's advanced two-way HFC systems. They accept a variety of plug-in, field configurable modules that allow greater flexibility in system design. Only the drop signals are affected by the plug-in. They are shipped with a standard jumper (T-JP) installed making them equivalent to FFT*-*N taps. All mechanical specifications are the same as the FFT*-*N taps.

SSP-N Splitters and Directional Couplers are equipped for strand and pedestal mounting. A swivel center conductor seizure mechanism and a rotatable faceplate allow a variety of input/output and RF/AC configurations for flexible installation, and a reduced need for cable loops. Can be equipped with shorting bars to reduce nuisance fuse blowing, or removed for power blocking. Fuses can also be installed at the users option. Capable of 15 A continuous (25 A for 2 hr @ 65 °C) allow for centralized powering and/or network powering of telephony devices.

FEATURES

Common Features:

- 5 MHz to 1 GHz bandwidth
- Superior HUM Modulation performance
- Minimal Insertion Loss
- Backwards compatible

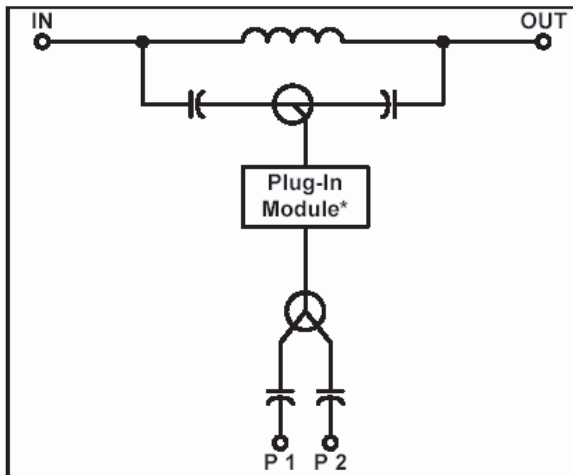
BTT & FFT Features:

- Ability to accept Plug-in modules for improved Return Path performance
 - Cable Equalization (T-EQ-*)
 - Return Path Attenuation (T-RPA/S-*)
 - Cable Simulation (T-CS-*)
- RF/AC Bypass capability (standard)
- 12 A Continuous Power Passing
- Surge Resilient F-ports
- Advanced F-port weather sealing
- Patented Auto-Seize "F" connectors
- Nickel plated Brass ports (SCTE approved)
- Upgradeable to Power Extracting
- Current Limiting (Power Extracting only)
- Twisted-pair Power Extracting (BTT only)

SSP Features:

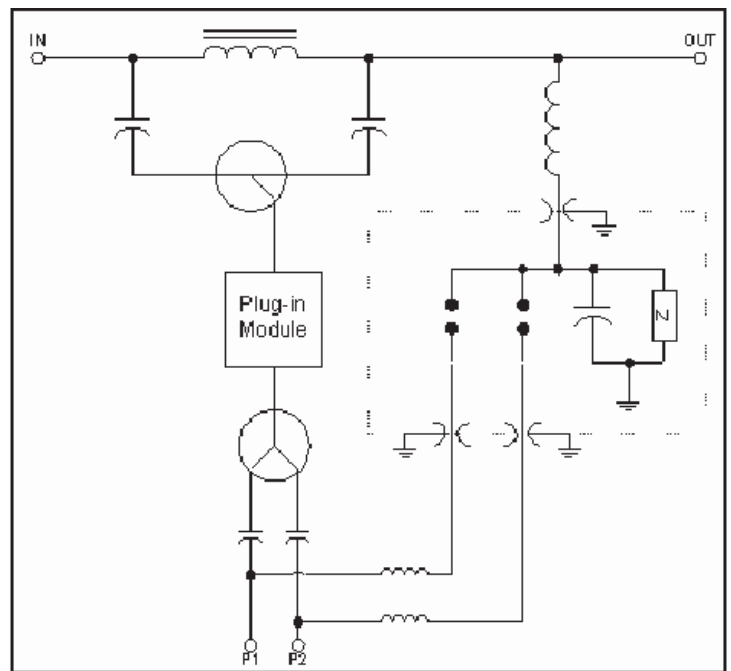
- " 15 A continuous Power Passing
- " Rotatable Faceplate
- " Swivel Center Seizure mechanism

FFT*.*P Tap Block Diagram



* Plug-In Module may be T-JP, T-EQ*, T-RPA/S*, T-HP/S-52, or T-CS*. Block Diagrams shown are for a 2-port Tap. The 4-port and 8-port Taps will have additional splitters after the Plug-In Module.

BTTF*.*P Tap Block Diagram



Tap Color Codes

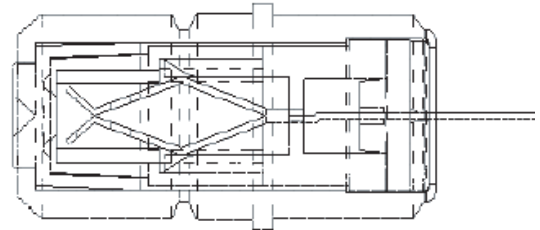
dB Value	Background	Lettering
4P	Purple	White
7P	White	Black
10P	Red	Black
12P	Red	Black
14P	Yellow	Black
15.5P	Yellow	Black
17P	White	Black
20P	Black	White
23P	Orange	White
26P	Lt. Orange	Black
29P	Lt. Orange	White

Passive Color Codes

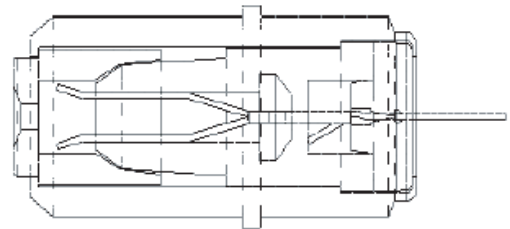
Model	Background	Lettering
SP-PI*	Purple	White
SSP-3*	White	Black
SSP-7*	Red	Black
SSP-9*	Light Blue	Black
SSP-12*	Black	White
SSP-16*	Yellow	White
SSP-3-636*	Green	White

P-Series F-Connector

Conventional F-Connector Design



Auto-Seize P-Series F-Connector Design



Specifications subject to change without notice.