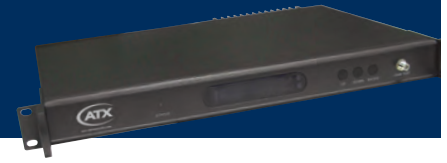


Q-SERIES®

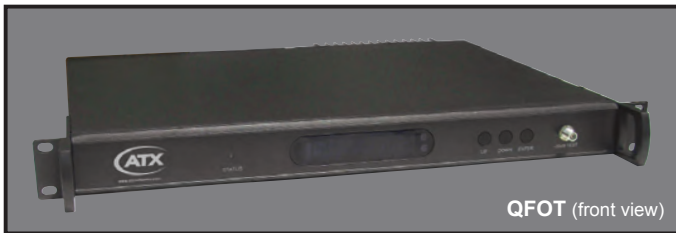
Fiber Optic Products



QFOT 1310nm Fiber Optic Transmitter:

Features:

- ▶ Up to 22 mW output power in 1RU
- ▶ Primarily used for TV video signals, digital TV signals & data signals transported over fiber
- ▶ Powering by 90-250 VAC (50 to 60 Hz) or -48 VDC
- ▶ 1310 ± 20nm wavelength
- ▶ Can accommodate up to 14 dB path loss
- ▶ High performance DFB direct modulated laser, advanced pre-distortion circuit & digital automatic processing techniques
- ▶ Microprocessor monitoring system automatically ensures excellent performance
- ▶ 47-870 MHz at levels from 15-25 dBmV (AGC/MGC)
- ▶ Electronic level setting & adjustments



QFOT 1310nm Specifications

SPECIFICATIONS	VALUE									
OPTICAL POWER	4 mW	6 mW	8 mW	10 mW	12 mW	14 mW	16 mW	18 mW	20 mW	22 mW
OPTICAL LINK PATH LOSS	7 dB	9 dB	10 dB	11 dB	11.8 dB	12.5 dB	13 dB	13.6 dB	14 dB	14.4 dB
OPTICAL WAVELENGTH	1310nm +/- 20									
TYPE OF LASER	DFB									
OPTICAL MODULATION MODE	Direct Modulation									
OPTICAL CONNECTOR TYPE	SC/APC									
FREQUENCY RANGE	47 to 870 MHz									
RF INPUT LEVEL	15 to 25 dBmV									
FLATNESS IN BAND	+/- 0.75 dB									
RF INPUT IMPEDANCE	75 Ohm									
INPUT RETURN LOSS	≥ 16 dB from 47 to 550 MHz, ≥ 14 dB from 550 to 870 MHz									
C/CTB	≥ 67 dB									
C/CSO	≥ 62 dB									
C/N	≥ 51 dB									
AGC CONTROL RANGE	+/- 7 dB									
MGC CONTROL RANGE	+/- 7 dB									
POWER VOLTAGE	90 to 250 VAC (50 to 60 Hz)									
POWER CONSUMPTION	24W									
OPERATION TEMPERATURE	0°C to +45°C (+32°F to +113°F)									
STORE TEMPERATURE	-20°C to +65°C (-4°F to +149°F)									
RELATIVE HUMIDITY	Max 95% Non-condensing									
DIMENSIONS	1.75"H x 17.0"W x 12.8"D (4.45H x 43.18W x 32.51D cm)									
WEIGHT	11.0 lbs (5.0 kg)									

QFOT 1310nm Fiber Optic Transmitter:

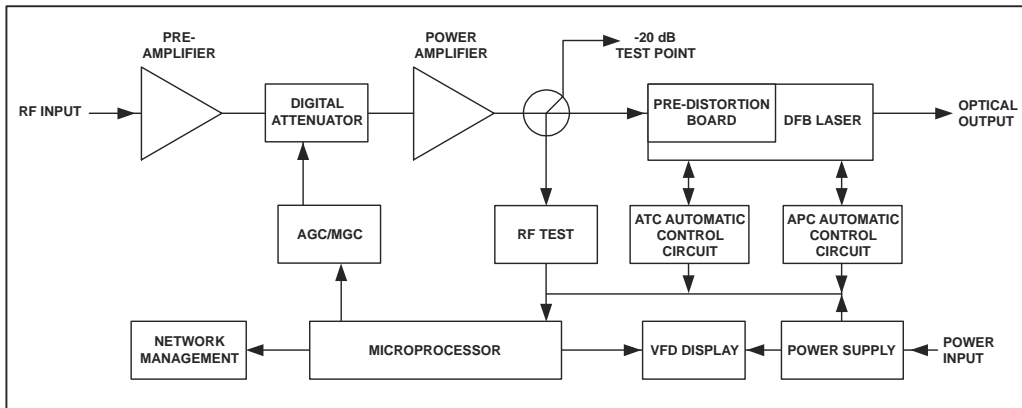
Optical Link Path C/N Specifications

OPTICAL LINK PATH C/N SPECIFICATIONS															
OPTICAL LOSS (dB)	4	5	6	7	8	9	10	11	12	13	14	15	16	17	18
QFOT1310-04	53.8	52.8	51.8	51.0	50.1	49.2	48.2								
QFOT1310-06				53.0	52.0	51.0	50.1	49.1	48.1						
QFOT1310-08					52.8	51.9	51.0	50.1	49.1	48.2					
QFOT1310-10						52.9	51.9	51.0	50.1	49.1	48.2				
QFOT1310-12							52.7	51.8	50.8	49.9	49.0	48.0			
QFOT1310-14								52.4	51.5	50.5	49.5	48.6	47.8		
QFOT1310-16									52.0	51.0	50.1	49.1	48.1		
QFOT1310-18									52.5	51.6	50.6	49.7	48.7	47.9	
QFOT1310-20										51.9	51.0	50.0	49.0	48.0	
QFOT1310-22											52.2	51.4	50.4	49.4	48.6

Ordering Information

Part Number	Description
QFOT1310-04	Optic Transmitter, 870 MHz, 1310nm, DFB, SC/APC, 4mw
QFOT1310-06	Optic Transmitter, 870 MHz, 1310nm, DFB, SC/APC, 6mw
QFOT1310-08	Optic Transmitter, 870 MHz, 1310nm, DFB, SC/APC, 8mw
QFOT1310-10	Optic Transmitter, 870 MHz, 1310nm, DFB, SC/APC, 10mw
QFOT1310-12	Optic Transmitter, 870 MHz, 1310nm, DFB, SC/APC, 12mw
QFOT1310-14	Optic Transmitter, 870 MHz, 1310nm, DFB, SC/APC, 14mw
QFOT1310-16	Optic Transmitter, 870 MHz, 1310nm, DFB, SC/APC, 16mw
QFOT1310-18	Optic Transmitter, 870 MHz, 1310nm, DFB, SC/APC, 18mw
QFOT1310-20	Optic Transmitter, 870 MHz, 1310nm, DFB, SC/APC, 20mw
QFOT1310-22	Optic Transmitter, 870 MHz, 1310nm, DFB, SC/APC, 22mw

Functional Schematic



Specifications subject to change without notice.

