



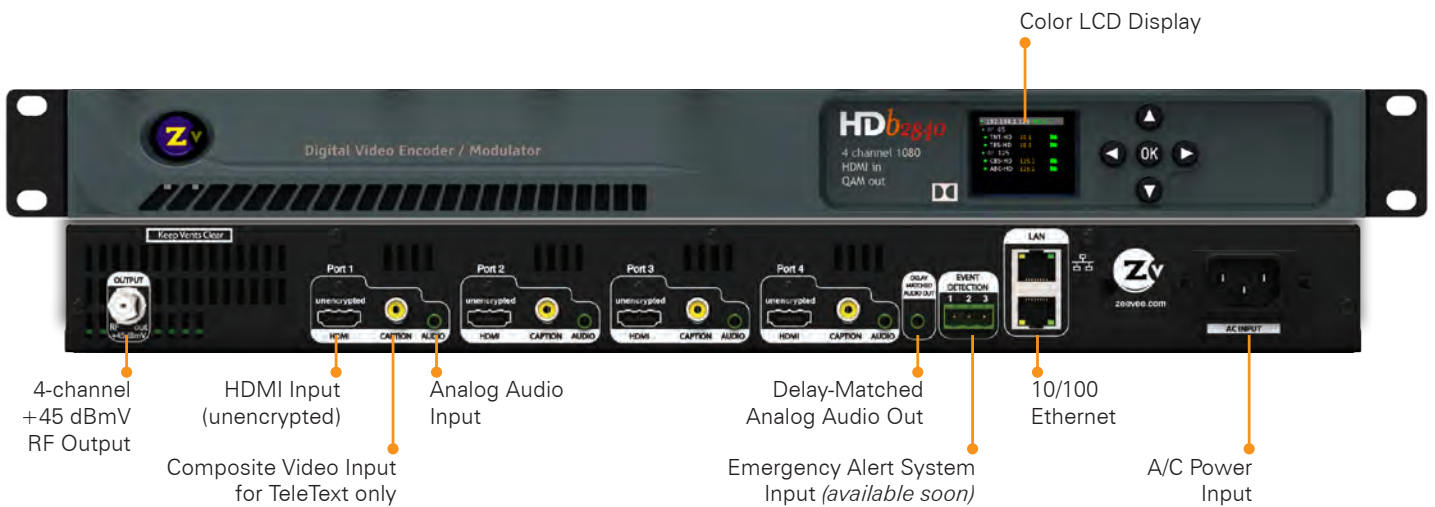
# HDbridge2000 SERIES



Smarter, High-Density  
HD Video Distribution Over Coax

## HD**b**2840

ZeeVee's HDb2840 encoder/modulator converts unencrypted HDMI video sources such as signage players into digital cable channels that are **broadcast over existing coax cabling to an unlimited number of HDTVs.**



**PLUS a bonus 5th Channel!** — You can save a short video loop to the internal memory and use it as an additional signage channel.

### IDEAL USES:

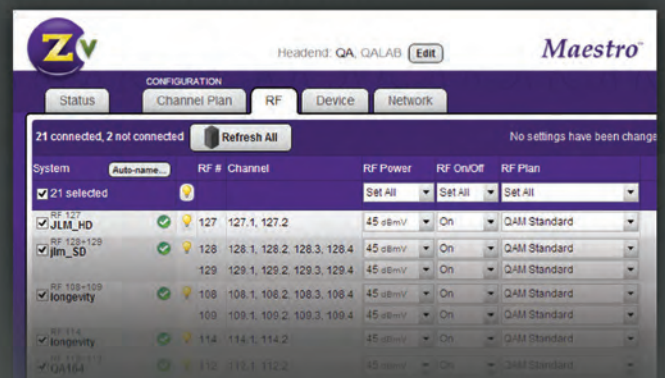
- Distribute HD video throughout your facility
- Replace multiple signage players
- Commercial or residential

### Advanced Management:

- Maestro Headend Management Software
- Front-Panel Color LCD
- Local and/or Remote Configuration

### Compatibility:

- Use Existing Coax Cabling
- Compatible with any HDTV
- MPEG2 Video and AC3 Audio Encoding
- QAM Output



VIDEO INPUT	HDMI Video	4 ports per model
	Closed Caption	EIA/CEA-608 captions accepted over composite video input (-NA versions only)
	Internal Memory	MPEG-2 Program Stream file, up to 400MB
AUDIO INPUT	Analog Audio Input	75 Ohm 0 to 0.7v at Line-level output. Stereo input on industry standard 3.5mm pigtail connector
	Digital Audio	Digital as element of HDMI 1.3 port
	Encoding	Internally encoded into Dolby® Digital AC-3 or MPEG1 Layer 2 (varies by region)
VIDEO ENCODER	Encoder Video Profile	MPEG2 HD Profile 2: ISO13818-2 MP@HL
	Traffic Shaping	Variable Bit Rate
	Video Transport Bit Rate	49.76 Mbps
	Video Encoding Data Rates	Variable, 10 Mbs - 24 Mbs per channel
	Average Encoding Data Rate	18 Mbs per channel
	Encoding Latency	Programmable 100 msec to 400 msec
	Color Profile	4:2:0
	GOP Size	24
	Video, Audio PID	Programmable
	Program Information	Programmable
AUDIO ENC.	<b>Audio Encoder</b>	
	Encoder Audio Profile	ATSC A/52, Dolby® Digital (AC-3) or Mpeg 2 layer 1 (varies by region)
MODULATOR / UPCONVERTER	Modulation Types	QAM 256 (ITU-T J83 Annex B) Interleaving modes: (64,2) only OR DVB-T, DVB-C, QAM 256 (ITU-T J83 Annex A) (varies by region)
	Cable Standard	HRC, IRC or STD or User defined (varies by region)
	Frequency Range	Frequency Agile from 54 to 864MHz <ul style="list-style-type: none"> <li>• 2 kHz resolution</li> <li>• +/- 30 ppm accuracy</li> <li>• +/- 35 ppm stability</li> </ul>
	Output Power	+45 dBmV typical
	Output Level Adjust	25 - 45 dBmV in 1dBmV steps
	MER	38 dB typical
	I/Q Amplitude Imbalance	< 1% typical
Spectral Tilt	<= 1dB over 6MHz typical	
CONTROL / SETUP	Network interface	10/100 mb Ethernet via RJ45 connection IP address via DHCP or set by user HTML/Javascript served web interface for easy configuration Telnet connection for CLI scripting Easy firmware updates All settings saved in NV storage
	Front Panel Color Display	Quickly obtain status at a glance
GENERAL	Power	100-240VAC 50/60Hz, 60W max. 30W Typical. IEC 60320-C14
	Cooling	Dual Internal cooling fans, Front Inlet, Rear Exhaust
	Enclosure Type	Metal
	Enclosure Dimensions	1.72" H x 17.33" W (without rack mount ears) x 9.9" D 43.6mm H x 440.2mm W x 251.5mm D
	System Weight	6.25lb (2.84 kg)
	Carton Dimensions (individual)	4.25" H 30.875" W 12.125" D 108 mm H 785 mm W 308 mm D
	Shipping Weight	7.88 lbs (3.58 kg)
	Temperature/Humidity	Operating +32F to +113F (0C to +45C) / 10% to 80%, non-condensing
	Vibration	NSTA 1A in carton
	MTBF	45,000 hours
	Compliance	FCC Class A, IEC60065, EN61000 (see manual for specifics), CE, RoHS
	Part number	HB2840-NA, HDb2840-EU
	Model name	HDb2840
Warranty	2 years	

©2014 ZeeVee, Inc. All rights reserved. ZeeVee, the ZeeVee logo, and all trademarks are the property of ZeeVee, Inc. All information is subject to change without notice and ZeeVee does not warrant the information's accuracy or correctness. All other trademarks are the property of their respective owners.