

MAXNET[®]

RF & L-Band Signal Management

Patented
U.S.# 6,842,348



Chassis & Cable Management Options

Chassis:

- ▶ Active 5RU chassis (required if using active modules but will also fit passive modules)
- ▶ Remote powered 5RU active chassis (required if using active modules but will also fit passive modules)
- ▶ Passive 5RU chassis
- ▶ 3RU horizontal passive chassis
- ▶ 1RU horizontal passive chassis



MN1 Passive Chassis
(front view)

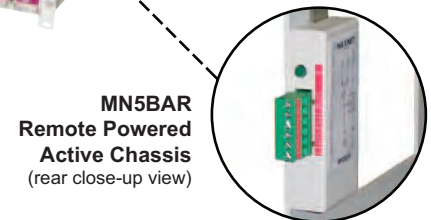


MN3 Passive Chassis
(front view)



MN5BA Active Chassis
(front view)

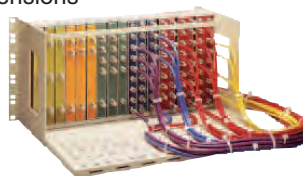
MN5B Standard Chassis
(front view)



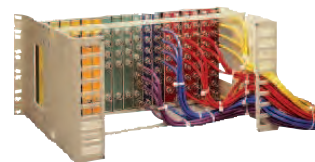
MN5BAR Remote Powered Active Chassis
(rear close-up view)

Cable Management Options:

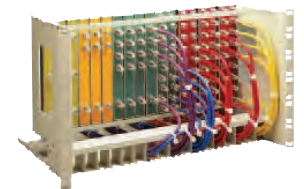
- ▶ Cable management bars (for all chassis)
- ▶ Cable management tray (front mount active & passive chassis)
- ▶ Cable management ears (front mount active & passive chassis)
- ▶ 1RU cable management tray (rear mount 5RU passive chassis)
- ▶ 23" rack mount extensions



MN5T Front Mount Chassis with Cable Management Tray
(rear view)



MN5E Front Mount Chassis with Cable Management Ears
(rear view)



MN5R Rear Mount Chassis with 1RU Cable Management Tray
(front view)

Part Number	Description	Part Number	Description
MN1	1RU 19" Horizontal Chassis	MN5R	5RU 19" Vertical Chassis, Rear Mount
MN1RK	1RU 19" Cable Management Kit (to be used with MN5R)	MN5T	5RU 19" Vertical Chassis, Front Mount with Cable Mgmt. Tray
MN3	3RU 19" Horizontal Chassis	MN23EX	23" Rack Mount Extensions
MN5B	5RU 19" Vertical Chassis with 2 Cable Bars	MN5BA	5RU 19" Vertical POWER/ACTIVE Chassis, Front Mount with 2 Cable Bars
MN5E	5RU 19" Vertical Chassis, Front Mount with Cable Mgmt. Ears	MN5TA	5RU 19" Vertical POWER/ACTIVE Chassis, Front Mount with Mgmt. Tray
MN5EM	5RU 23" Vertical Chassis, Rear Mount	MN5BEX	5RU 19" Vertical Chassis with Extended Cable Bars
MNEAR	Cable Management Ears for MAXNET Chassis		